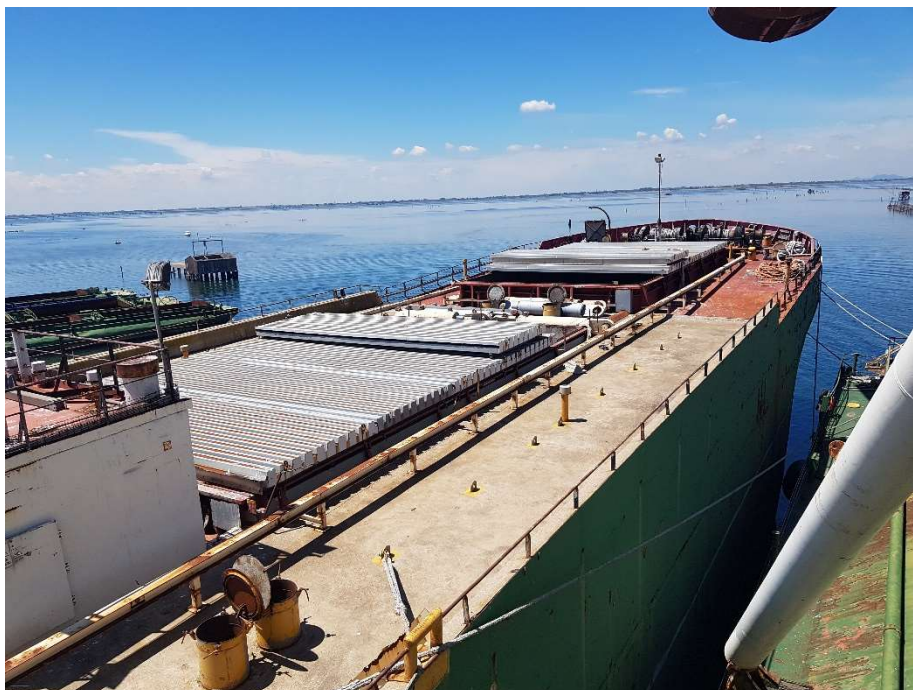


Ref B-77



Type:	steel push barge with hatchcovers
Length:	115.00m
Width:	19.30m
Draft:	7.50m
Tonnage:	6116t
Displacement:	17095,845m ³
Loading tanks:	4pcs; 5 watertight transverse bulkheads
Built:	1971, shipyard De Temse-BE
Class:	Dutch SI valid till 25/04/2026
Price:	on request

All our offers are subject unsold, details believed to be correct but not guaranteed. We reserve the right to change specifications, prices etc. without prior notice.

Kamar Shipbuilding B.V.

+31-782049339

+31-653330803/622988822

info@kamar.nl

www.kamar.nl