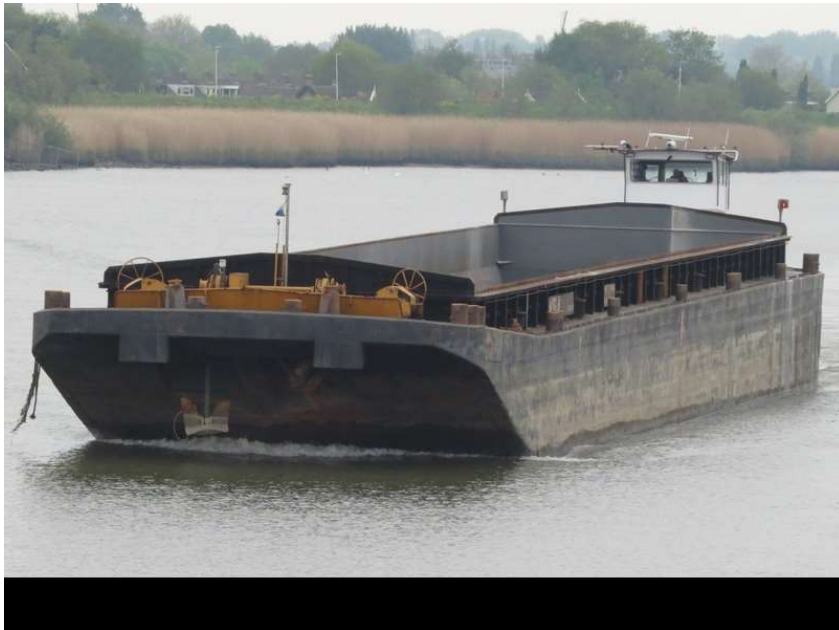


Ref B-125



Type:	steel push barge
Length:	76.46m
Width:	11.40m
Draft:	4.08m
Loading capacity:	2712,921t
Built:	1979, Stocznia Szczecin – PL
Class:	CvO valid till 2027
Price:	on request

Please contact us for more information!

All our offers are subject unsold, details believed to be correct but not guaranteed. We reserve the right to change specifications, prices etc. without prior notice.

Kamar Shipbuilding B.V.

+31-782049339

+31-653330803/622988822

info@kamar.nl

www.kamar.nl