

## REF PT-17



Typ:	Schwimmkran
Länge:	28.06m
Breidte:	15.28m
Tiefgang:	01.10m
Tragfähigkeit:	100T
Gebaut:	1962, Rotterdam- NL
Klasse:	gültig bis 04/01/2028

All our offers are subject unsold, details believed to be correct but not guaranteed. We reserve the right to change specifications, prices etc. without prior notice.

**Kamar Shipping Group**

+31-78-2049339

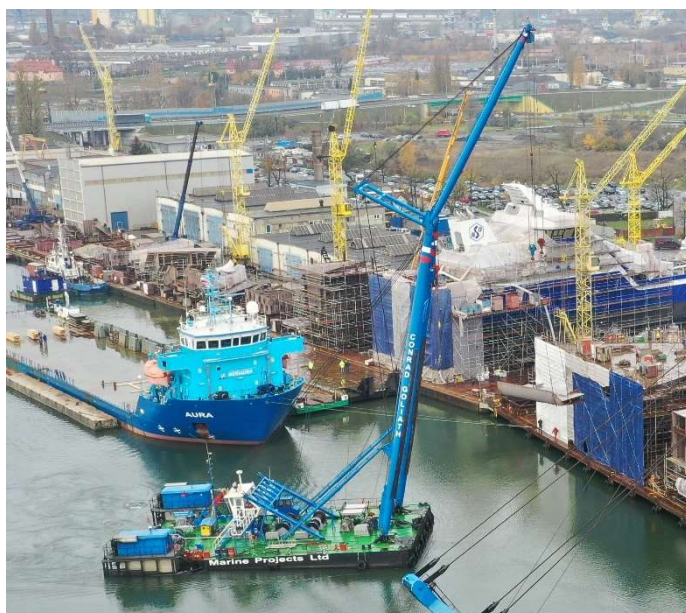
+31-6-53330803

+31-6-22988822

[info@kamar.nl](mailto:info@kamar.nl)

[www.kamar.nl](http://www.kamar.nl)

NEWBUILDING AND DESIGN - SHIPBROKING - TRADING



Preis:                      auf Anfrage

**Bitte kontaktieren Sie uns falls Sie weitere Informationen wünschen!**

All our offers are subject unsold, details believed to be correct but not guaranteed. We reserve the right to change specifications, prices etc. without prior notice.

**Kamar Shipping Group**

[info@kamar.nl](mailto:info@kamar.nl)

[www.kamar.nl](http://www.kamar.nl)

+31-78-2049339

+31-6-53330803

+31-6-22988822