

REF P-57



Type:	Duw-sleepboot, enkelschroef, 1 duwsteven
Lengte:	12.60 m
Breedte:	3.60 m
Diepgang:	1.30 m
Kijkhoogte:	3.60 m
Gebouwd :	1961, Krimpen - NL
Hoofdmotor:	200 PK Weichai bj 2026
Klasse:	CvO tot 2031
Generator:	12 kVA Hatz
Koppellieren:	hydraulisch
Prijs:	op aanvraag

All our offers are subject unsold, details believed to be correct but not guaranteed. We reserve the right to change specifications, prices etc. without prior notice.

Kamar Shipping Group

info@kamar.nl

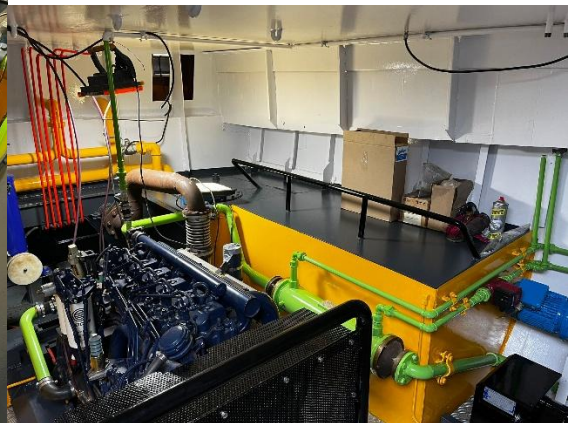
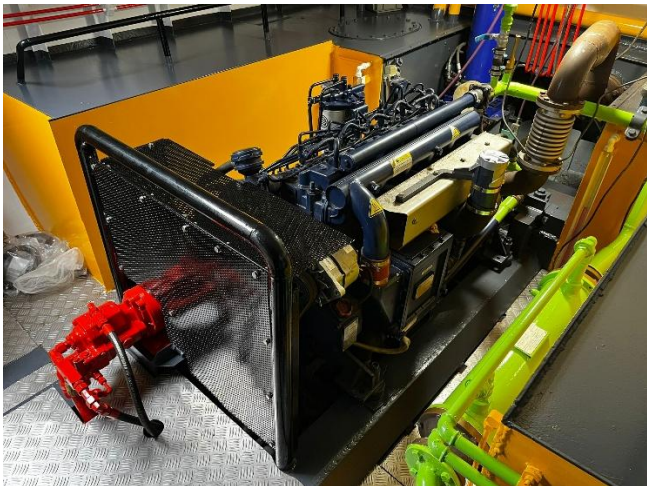
www.kamar.nl

+31-78-2049339

+31-6-53330803

+31-6-22988822

NEWBUILDING AND DESIGN - SHIPBROKING - TRADING



All our offers are subject unsold, details believed to be correct but not guaranteed. We reserve the right to change specifications, prices etc. without prior notice.

Kamar Shipping Group

info@kamar.nl

www.kamar.nl

+31-78-2049339

+31-6-53330803

+31-6-22988822